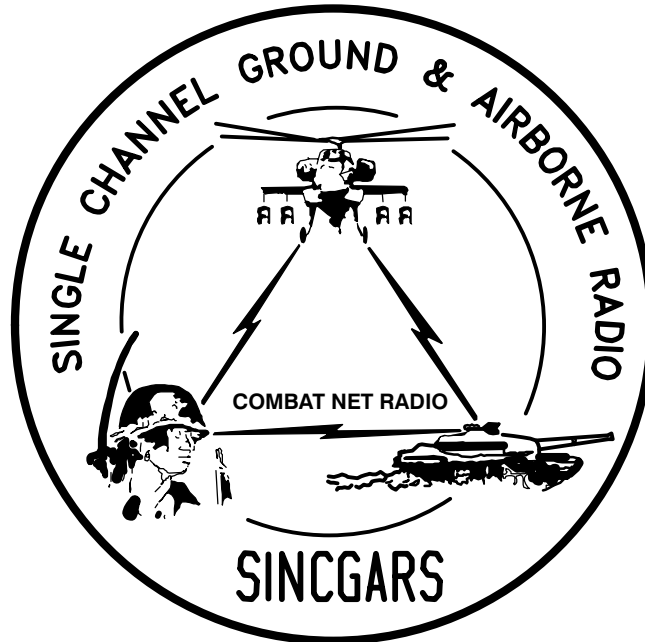


TECHNICAL BULLETIN



**INSTALLATION INSTRUCTIONS FOR
INSTALLATION KIT, ELECTRONIC EQUIPMENT,
MK-2369/VRC (NSN 5895-01-307-5486) (EIC: N/A)
TO PERMIT INSTALLATION OF RADIO SET:
AN/VRC-90 SERIES AND AN/VRC-92 SERIES
IN A
FLIGHT COORDINATION CENTRAL
AN/TSC-61B**

Approved for public release; distribution is unlimited.

HEADQUARTERS, DEPARTMENT OF THE ARMY

1 AUGUST 1999

**INSTALLATION INSTRUCTIONS FOR
 INSTALLATION KIT, ELECTRONIC EQUIPMENT,
 MK-2369/VRC (NSN 5895-01-307-5486) (EIC: N/A)
 TO PERMIT INSTALLATION OF
 RADIO SET: AN/VRC-90 SERIES AND AN/VRC-92 SERIES
 IN A
 FLIGHT COORDINATION CENTRAL
 AN/TSC-61B**

REPORTING OF ERRORS AND RECOMMENDING IMPROVEMENTS

You can help improve this manual. If you find any mistakes, or if you know of a way to improve the procedures, please let us know. Mail your letter, DA Form 2028 (Recommended Changes to Publications and Blank Forms) or DA 2028-2 located in back of this manual direct to: Commander, US Army Communications-Electronics Command Fort Monmouth, ATTN: AMSEL-LC-LEO-D-CS-CFO, Fort Monmouth, New Jersey 07703-5000. The Fax number is 732-532-1413, DSN 992-1413. You may also e-mail your recommendation to AMSEL-LC-LEO-PUBS-CHG@ce-com3.monmouth.army.mil.

In either case a reply will be furnished direct to you.

TABLE OF CONTENTS

Subject	Section	Page
Scope	0.1	1
General Information	0.2	1
Maintenance Forms, Records, and Reports	0.3	1
Reports of Maintenance and Unsatisfactory Equipment	0.3.1	1
Report of Packing and Handling Deficiencies	0.3.2	1
Discrepancy in Transportation Deficiency Report (TDR) (SF 361)	0.3.3	1
Consolidated Index of Army Publications	0.4	1
Purpose of Installation	1.	2
End Item or System to be Modified	2.	2
Application Times	3.	2
Time for Completion of Installation	3.1	2
Time for Installation of One Assembly or Component	3.2	2
Preparation for Installation	4.	2
Preparation of Vehicle	4.1	2
Preparation of MK	4.2	2
MK, Distribution, and Consumables	4.3	3
Tools and Test, Measurement, and Diagnostic Equipment (TMDE) Required	4.4	7
Installation Procedures	5.	8
Installation of Antenna AS-3900/VRC (antenna)	5.1	10
Installation of Antenna Base	5.1.1	10
Installation of Top Antenna Assembly	5.1.2	12
Installation of Mounting Base, Electrical Equipment MT-6352/VRC (mounting base)	5.2	13
Installation of Cables	5.3	15
Installation of Mounting Base, Electrical Equipment MT-6353/VRC	5.4	18
Post-Installation and Checkout	5.5	20
Appendix A. References		A1

*This manual supersedes TB 11-5820-890-20-50 dated 1 September 1993.

LIST OF ILLUSTRATIONS

Figure	Title	Page
4-1	MK Illustrated Parts List	5
4-2	Illustrated Parts List for Table 4-2	6
5-1(1)	MK and Radio Installation: MK Equipment Locations	8
5-1(2)	MK and Radio Installation: Radio Equipment Locations	9
5-2(1)	Antenna Base Installation: Installing Shelter Antenna Base	10
5-2(2)	Antenna Base Installation: Installing Tripod and Mast Antenna Bases	11
5-3	Top Antenna Assembly Installation	12
5-4	Mounting Base Installation: Equipment Rack	13
5-5(1)	Cable Installation: Exterior Cabling	15
5-5(2)	Cable Installation: Interior Cabling	16
5-6	MT-6353/VRC Mounting Base Installation	18
5-7	Cable Diagram: For AN/VRC-90 Series and AN/VRC-92 Series	21

LIST OF TABLES

Number	Title	Page
4-1	Parts List for Installation of Radio Set: AN/VRC-90 Series and AN/VRC-92 Series	4
4-2	Additional Items Required for Installation of Radio Set AN/VRC-92 Series	6

0.1 SCOPE

This technical bulletin provides Installation Instructions for Installation Kit, Electronic Equipment, MK-2369/VRC, commonly referred to as the Mounting Kit (MK). The MK shall be installed into the following type of shelter(s):

- Flight Coordination Central AN/TSC-61B

The MK is used for installation of radio set components at field locations. The information contained in this technical bulletin is the official authorization to perform the installation at the unit maintenance level.

NOTES

- This technical bulletin is not an authorization for requisition or turn-in of shelters.
- This technical bulletin does not establish quantity or types of shelters assigned to using units.

This technical bulletin does not contain information on the maintenance or replacement of the MKs. This information is contained in the MAC of TM 11-5820-890-20-2, and RPSTL of TM 11-5820-890-20P.

0.2 GENERAL INFORMATION.

The MK becomes operable when all the radio set components are installed in the shelter and correct power is supplied. Refer to TM 11-5820-890-20-1 or TM 11-5820-890-20-4 for installation, Operational (OP) Check instructions, and required maintenance procedures. Refer to TM 11-5820-890-20P for repair parts.

Included in the Radio Set: AN/VRC-90 Series and AN/VRC-92 Series are:

- Radio Set: AN/VRC-90 Series and AN/VRC-92 Series (for RT-1523(C)/U)

0.3 MAINTENANCE FORMS, RECORDS, AND REPORTS.

0.3.1 Reports of Maintenance and Unsatisfactory Equipment. See section 4.2.2.3 for information.

0.3.2 Report of Packaging and Handling Deficiencies. See section 4.2.2.1 for information.

0.3.3 Discrepancy in Transportation Deficiency Report (TDR) (SF361). See section 4.2.2.2 for information.

0.4 CONSOLIDATED INDEX OF ARMY PUBLICATIONS.

Refer to the latest issue of DA Pam 25-30 to determine whether there are new changes, or additional publications pertaining to the equipment.

1. PURPOSE OF INSTALLATION.

The Installation Kit, Electronic Equipment, MK-2369/VRC (MK) contains the items needed to mount Radio Set: AN/VRC-90 Series and AN/VRC-92 Series in a Flight Coordination Central AN/TSC-61B (shelter). To install MT-6353/VRC mounting base, see section 5.4 for instructions.

2. END ITEM OR SYSTEM TO BE MODIFIED.

Not applicable.

3. APPLICATION TIMES.

3.1 Time for Completion of Installation. Using two people, a total of 3.5 work hours is required. Typical shelter downtime is 4.0 hours.

3.2 Time for Installation of One Assembly or Component. The following table lists the time required to install one component. All times have been rounded off to the nearest half hour. The sum of these times will not reflect the typical shelter downtime.

ITEM	SECTION	TIME
Antenna AS-3900/VRC	5.1	0.5
Mounting Base, Electrical Equipment MT-6352/VRC	5.2	1.5
Cables	5.3	1.0

4. PREPARATION FOR INSTALLATION.

This section explains how to prepare the shelter and MK for installation.

4.1 Preparation of Shelter. To prepare the shelter for installation, insure that the site includes adequate lighting and a power source when drilling is required. Inspect the shelter for damage that could affect installation. Have any such damage repaired before installing MK.

4.1.1 Items to be Removed. Remove existing AN/VRC-12 radio family installation kit/harness. See TM 11-5820-401-20-2 for removing items used with intercom systems, or TM 11-5820-401-20-1 (used without intercom systems), and TM 11-5895-469-12.

4.1.2 List of Items to be Retained. Not applicable.

4.2 Preparation of MK. To prepare MK, unpack, inspect and check inventory.

4.2.1 Precautions During Handling. Observe these steps to prevent equipment damage.

- a. Keep dust covers in place on connectors.
- b. Do not disassemble or modify parts in MK unless authorized to do so.
- c. Keep mounting hardware covered and protected until needed.
- d. When exposed to moisture, rain or salt water, keep all parts dry to prevent corrosion.

4.2.2 Unpack and Inspect Equipment.

4.2.2.1 Inspect Packaging for Evidence of Damage. Any shipping damage should be reported on SF364 Report of Discrepancy (ROD) as prescribed in AR 735-11-2/DLAR 4140.55/NAVMATINST 4355.73A/AFR 400-64/MCO 4430.3F.

4.2.2.2 Unpack and Inventory MK. If any item is missing, fill out and forward Transportation Deficiency Report (TDR) (SF361) as described in AR 55-38/NAVSUPINST 4610.33C/AFR 75-18/MCO P4610.19D/DLAR 450015.

4.2.2.3 Examine Each Item for Damage. If any item is damaged, fill out and forward SF364 Report of Discrepancy (ROD) as prescribed in AR 735-11-2/DLAR 4140.55/NAVMATINST 4355.73A/AFR 400-64/MCO 4430.3F. All damages should be reported as prescribed by DA Pam 738-750, as contained in Maintenance Management Update.

4.3 MK, Distribution, and Consumables.

4.3.1 Items Supplied in MK and/or Required for Installation. Use Table 4-1 and figure 4-1 to identify and inventory MK parts supplied to install Radio Set: AN/VRC-90 Series and AN/VRC-92 Series. Refer to Table 4-2 and figure 4-2 to identify additional items required to install Radio Set AN/VRC-92 Series.

4.3.2 Distribution and Issue Instructions.

- a. US Forces: Do not requisition MK. They will be shipped automatically.
- b. US Army Depots: Requisition MK through supply channels.
- c. Multiservice: Instructions shall be included for multiservice modifications.
- d. MAP/MAS Countries: Instructions shall be provided for MAP/MAS countries.

Table 4-1. Parts List for Installation of Radio Set: AN/VRC-90 Series and AN/VRC-92 Series

NSN	ITEM DESCRIPTION AND PART NUMBER	QUANTITY IN MK	SMR CODE	FIGURE, ITEM NO.
5985-01-297-2971	Antenna AS-3900/VRC (A3017899-1)	3	PAOOF A	4-1, 2
5305-00-847-1159	Screw, Cap, Hexagon (3/8-16 x 1 3/4 in) MS35307-365 (8 Not Used)	12	PAOZZA	
5310-00-913-8881	Nut, Hexagon (3/8-16 in) MS51971-3 (8 Not Used)	12	PAOZZA	
5310-00-061-1258	Washer, Lock, Internal/External-Toothed (3/8 in) MS45904-76 (12 Not Used)	24	PAOZZA	
5310-00-889-2527	Washer, Lock, Internal/External-Toothed (5/16 in) MS45904-72 (4 Not Used)	6	PAOZZA	
5306-00-225-9086	Bolt, Machine (5/16-24 x 5/8 in) MS90726-31 (Not Used)	3	PAOZZA	
5330-01-205-2864	Gasket (A3013655-1)	3	PAOZZA	
5975-01-188-8873	Mounting Base, Electrical Equipment MT-6352/VRC (A3013367-1)	2	PAOOF A	4-1, 1
5306-00-225-9089	Bolt, Machine (5/16-24 x 1 in) MS90726-34 (Not Used)	10	PAOZZA	
5310-00-889-2527	Washer, Lock, Internal/External-Toothed (5/16 in) MS45904-72 (8 Not Used)	20	PAOZZA	
5310-00-880-7746	Nut, Hexagon (5/16-24 in) MS51968-5 (Not Used)	10	PAOZZA	
5995-01-219-7029	Cable Assembly, Radio Frequency CG-3855/VRC (5 FT, 0 IN) (A3014031-2)	1	PAOZZA	4-1, 7
5935-00-259-0205	Adapter, Connector M55339/20-00201	1	PAOZZA	4-1, 3
5306-00-225-8499	Bolt, Machine (5/16-18 x 1 in) MS90725-34	12	PAOZZA	
	Lead, Electrical - Ground Strap (A3013552-5)	1	XBOZZA	4-1, 4
4020-01-341-8795	Fiber Rope Assembly, Single Leg (A3167672-1)	1	PAOZZA	4-1, 6
5310-00-934-9759	Nut, Hexagon (No. 8-32 in) MS35649-284	2	PAOZZA	
	Plate, Mounting (A3014089-1)	1	XBOZZA	4-1, 5
5305-00-984-7350	Screw, Machine, Flat-Head (5/16-24 x 1 in) MS35191-308	4	PAOZZA	
5305-00-146-2524	Screw, Tapping, Hex-Head (1/4-14 x 3/4 in) MS51850-86	1	PAOZZA	
5305-00-054-6669	Screw, Machine, Pan-Head (No. 8-32 x 7/16 in) MS51957-44	2	PAOZZA	
5305-00-685-3511	Screw, Cap, Hexagon (1/4-28 x 3/4 in) MS35308-306	1	PAOZZA	
5305-00-531-1097	Screw, Cap, Hexagon (3/8-24 x 1 3/4 in) MS35308-365	4	PAOZZA	
5975-00-111-3208	Strap, Tiedown, Electrical Components MS3367-5-9	10	PAOZZA	
5310-00-061-0004	Washer, Lock, Internal/External-Toothed (No. 8) MS45904-57	6	PAOZZA	
5310-00-889-2528	Washer, Lock, Internal/External-Toothed (1/4 in) MS45904-68	2	PAOZZA	

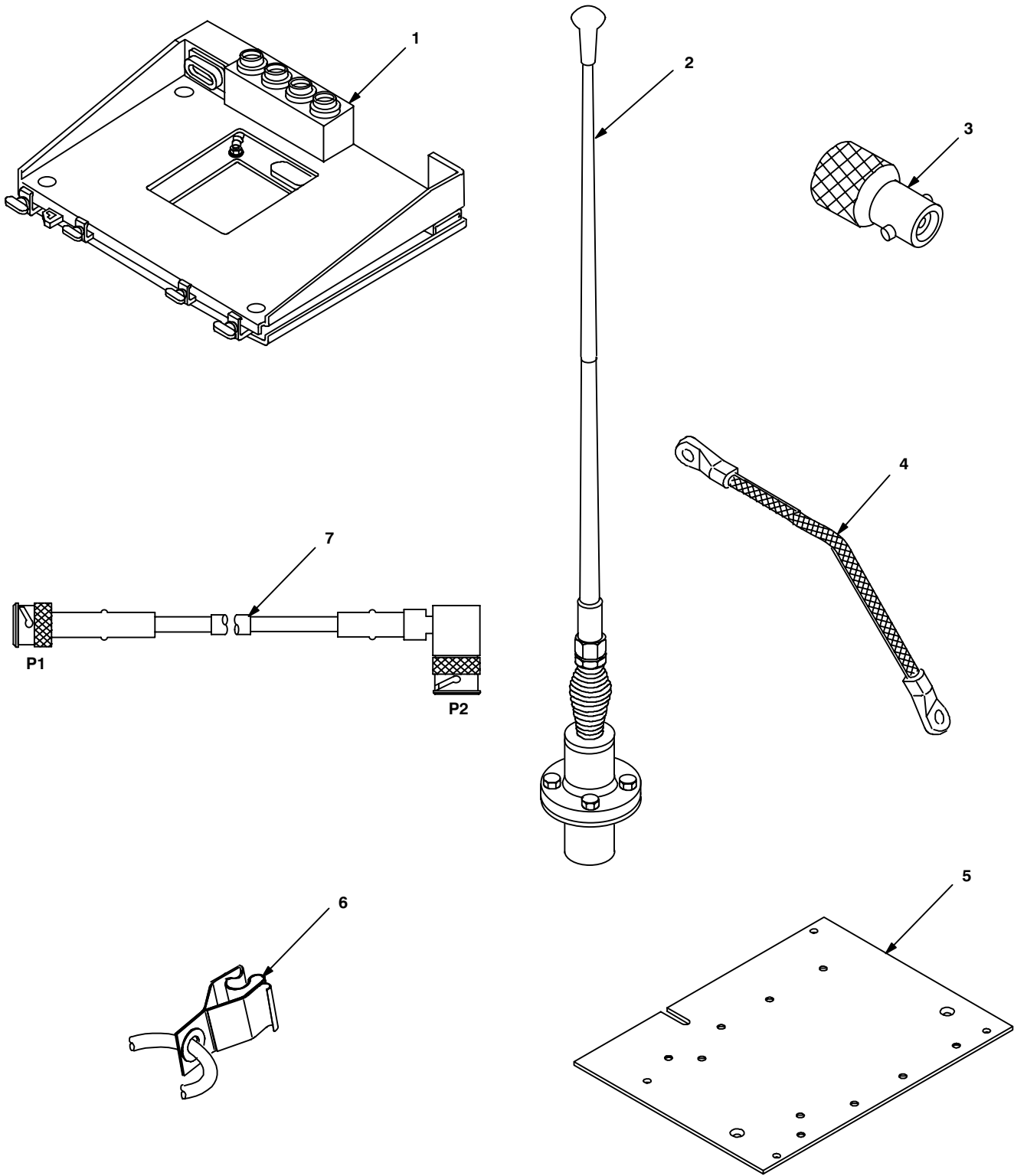


Figure 4-1. MK Illustrated Parts List

Table 4-2. Additional Items Required for Installation of Radio Set AN/VRC-92 Series

NSN	ITEM DESCRIPTION AND PART NUMBER	QUANTITY IN MK	SMR CODE	FIGURE, ITEM NO.
5975-01-235-1962	Mounting Base, Electrical Equipment MT-6353/VRC (A3014053-1)	1	PAOOHA	4-2, 1
5306-00-225-9089	Bolt, Machine (5/16-24 x 1 in) MS90726-34 (Not Used)	4	PAOZZA	
5310-00-880-7746	Nut, Hexagon (5/16-24 in) MS51968-5	2	PAOZZA	
5310-00-889-2527	Washer, Lock, Internal/External-Toothed (5/16 in) MS45904-72 (3 Not Used)	6	PAOZZA	
5310-00-081-4219	Washer, Flat (5/16 in) MS27183-12 (Not Used)	2	PAOZZA	
5975-00-111-3208	Nut Strip (A3014064-1)	1	XBOZZA	4-2, 5
5975-00-111-3208	Strap, Tiedown, Electrical Components, MS3367-5-9	4	PAOZZA	
5995-01-300-9324	Cable Assembly, Power, Electrical CX-13303/VRC (4 FT, 6 IN) (A3014040-9)	1	PAOZZA	4-2, 4
5995-01-222-4209	Cable Assembly, Special Purpose, Electrical CX-13291/VRC (3 FT, 0 IN) (A3014037-1)	1	PAOZZA	4-2, 2
5995-01-219-7025	Cable Assembly, Radio Frequency CG-3856/VRC (5 FT, 0 IN) (A3014032-3)	1	PAOZZA	4-2, 3

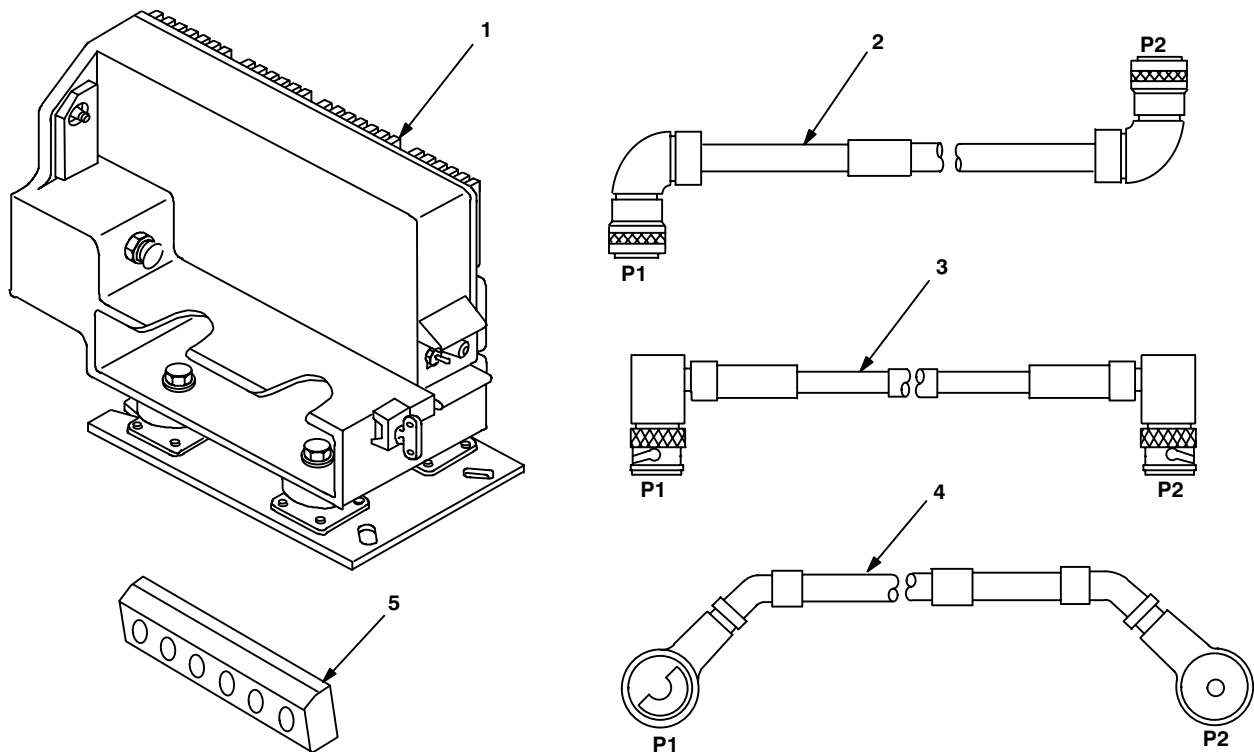


Figure 4-2. Illustrated Parts List for Table 4-2

4.3.3 Consumable Materials. The table below lists materials required for installation but not supplied with MK.

NSN	NOMENCLATURE
8040-00-117-8510	Adhesive-Sealant, Clear, RTV
6850-00-880-7616	Silicone Compound, MIL-S-8660
8030-00-292-1102	Conductive Anti-seize Compound

4.4 Tools and Test, Measurement, and Diagnostic Equipment (TMDE) Required. The following tools and TMDE are needed for installation.

NOMENCLATURE	NSN	QUANTITY
Radio Set*		1
Electric Grinder or Equivalent		1
Pocket Knife, Electrician's	5110-00-240-5943	1
Screwdriver, No. 2 Point Phillips, 4 in	5120-00-234-8913	1
Screwdriver, 1/4 in Flatblade, 4 in	5120-00-222-8852	1
Pliers, Round Nose	5120-00-240-6172	1
Pliers, Diagonal Cutting	5110-00-965-0974	1
Wrench, Open/Box: 7/16 in	5120-00-228-9505	1
1/2 in	5120-00-228-9506	1
9/16 in	5120-00-228-9507	1
11/32 in	5120-00-278-0342	1
Handle, Socket Wrench	5120-00-240-5364	1
Socket: 7/16 in	5120-00-227-6703	1
1/2 in	5120-00-237-0977	1
9/16 in	5120-00-227-6704	1
3/8 in	5120-00-227-6702	1
Electric Drill	5130-00-889-8994	1
Size 1 (.228 in)	5133-00-189-9246	1

* Use radio issued with your vehicle if available.

5. INSTALLATION PROCEDURES.

This section describes where and how to install MK items in the shelter. See figure 5-1 for an overall view of where the MK equipment, as well as radio components, typically will be installed. When installing MK equipment, be sure to read and follow instructions and illustrations carefully. To install MT-6353/VRC mounting base, see section 5.4 for instructions.

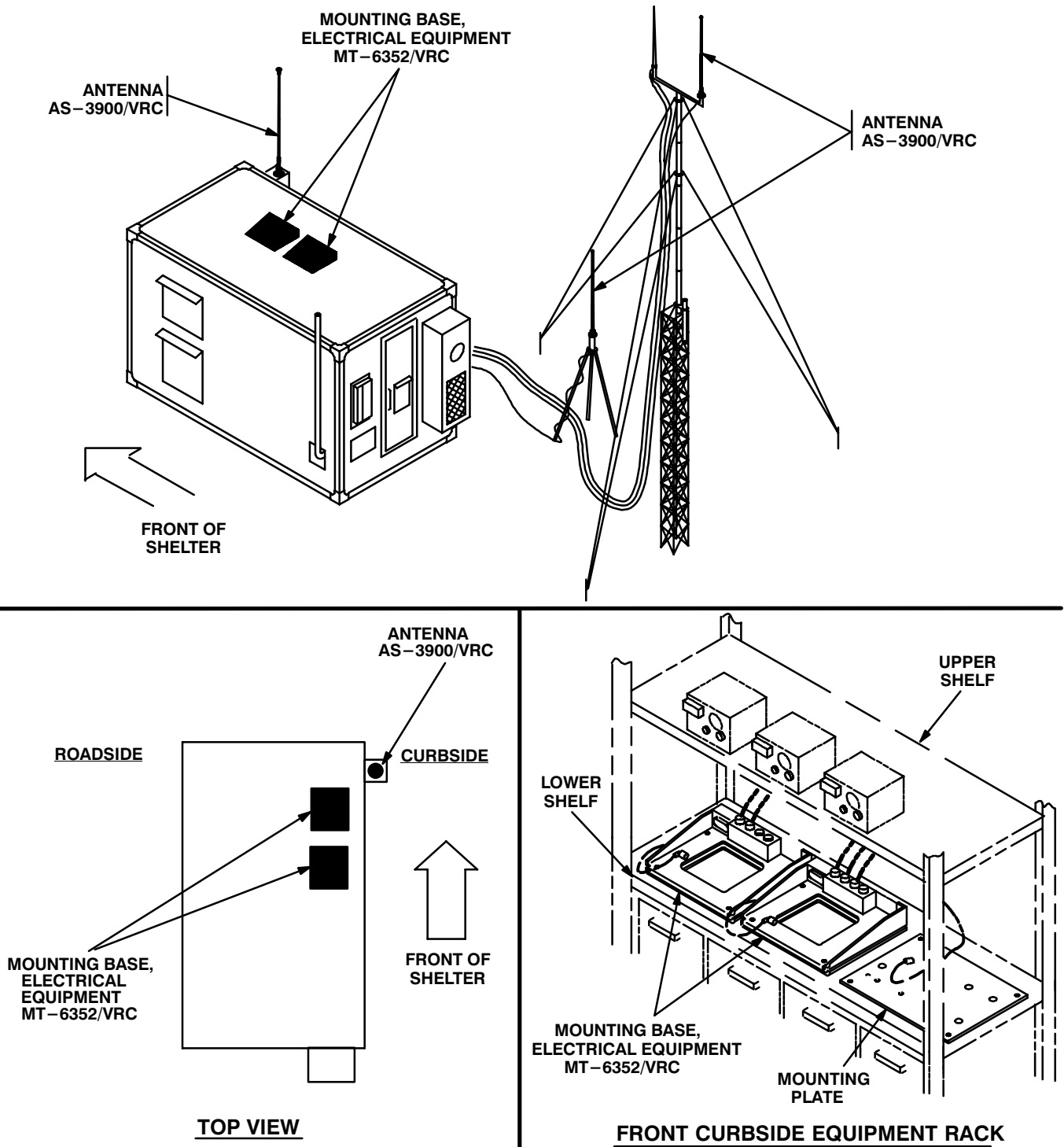
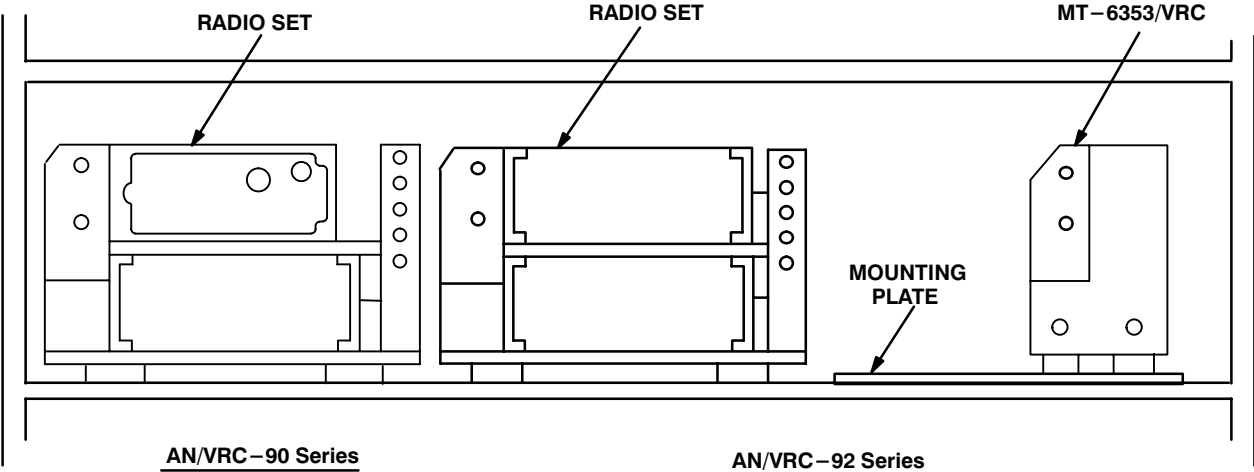


Figure 5-1 (1). MK and Radio Installation: MK Equipment Locations

5. INSTALLATION PROCEDURES. Continued

**INSTALLATION
FOR AN/VRC-90 Series
AND AN/VRC-92 Series**



REAR CURBSIDE EQUIPMENT RACK

Figure 5-1 (2). MK and Radio Installation: Radio Equipment Locations

5.1 Installation of Antenna AS-3900/VRC (antenna). Perform the following steps to install shelter antenna and tripod/mast antennas. See figure 5-1 (1) for location.

5.1.1 Installation of Antenna Base. Use steps a thru d to install shelter antenna base. Use steps e thru h to install both tripod and mast antenna bases.

ITEM	ACTION	REMARKS
------	--------	---------

NOTE

Apply a thin coat of adhesive-sealant to both sides of each internal/external-toothed (IET) washer during installation, and to the area of contact where IET washer is to be placed.

- | | | |
|--|---|--|
| a. Gasket (4). | Place on existing antenna bracket and align mounting holes. See figure 5-2 (1). | |
| b. Antenna base (1). | Place on top of gasket (4) and antenna bracket; then align mounting holes. | |
| c. Four cap screws (2), eight IET washers (3) and four nuts (5). | Install and secure to antenna base (1) and antenna bracket. | Tools: 9/16 in socket and 9/16 in open/box wrench. |
| d. Ground strap (8), cap screw (7) and two IET washers (6). | Install and secure to bottom mounting hole in antenna bracket and wall. | Tools: 7/16 in socket. |

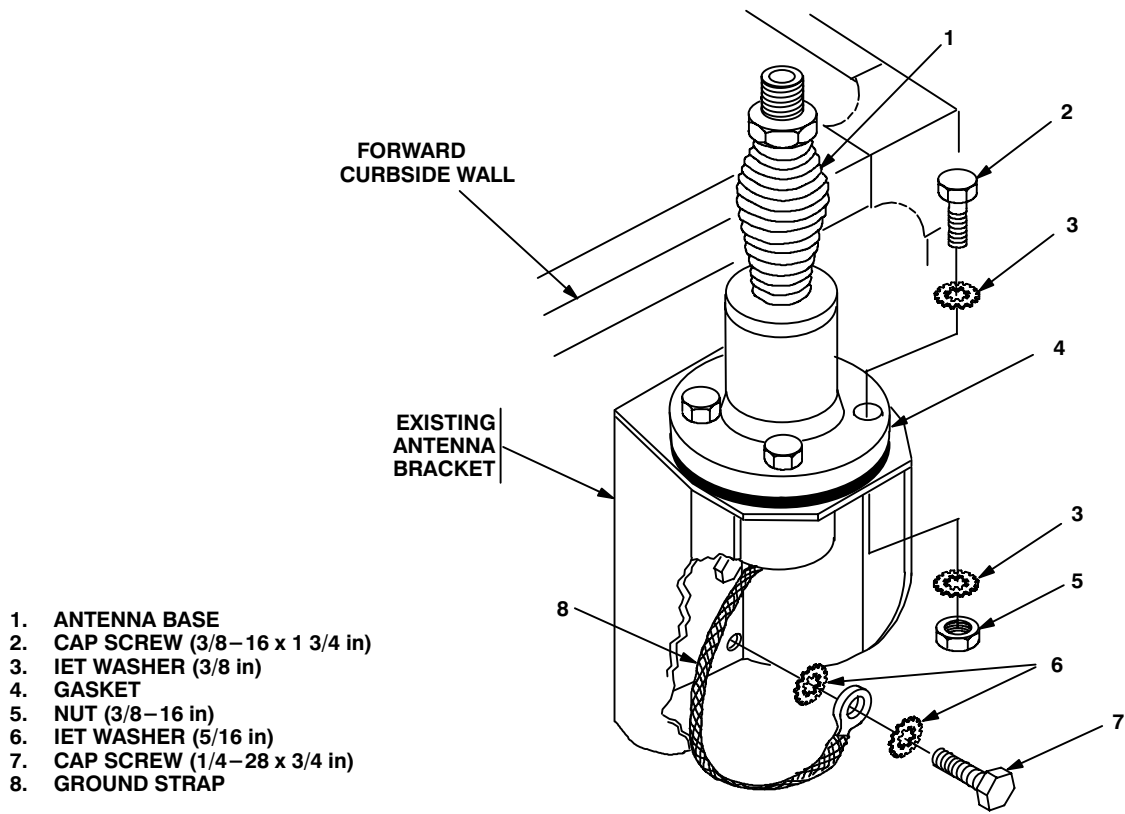


Figure 5-2 (1). Antenna Base Installation: Installing Shelter Antenna Base

5.1.1 Installation of Antenna Base. Continued

ITEM	ACTION	REMARKS
e. Gasket (4).	Place on existing tripod/mast adapter assembly and align over mounting holes and studs. See figure 5-2 (2).	
f. Antenna base (3).	Place on top of gasket (4) and adapter assembly; then align with mounting holes and studs.	
g. Two cap screws (1) and two IET washers (2).	Install and secure to antenna base (3) and adapter assembly.	Tools: 9/16 in socket.
h. Ground strap (7), pan-head machine screw (8), three IET washers (6) and nut (5).	Install and secure to existing hole. See figure 5-2 (2), detail A.	Tools: Phillips screwdriver and 11/32 in open/box wrench.

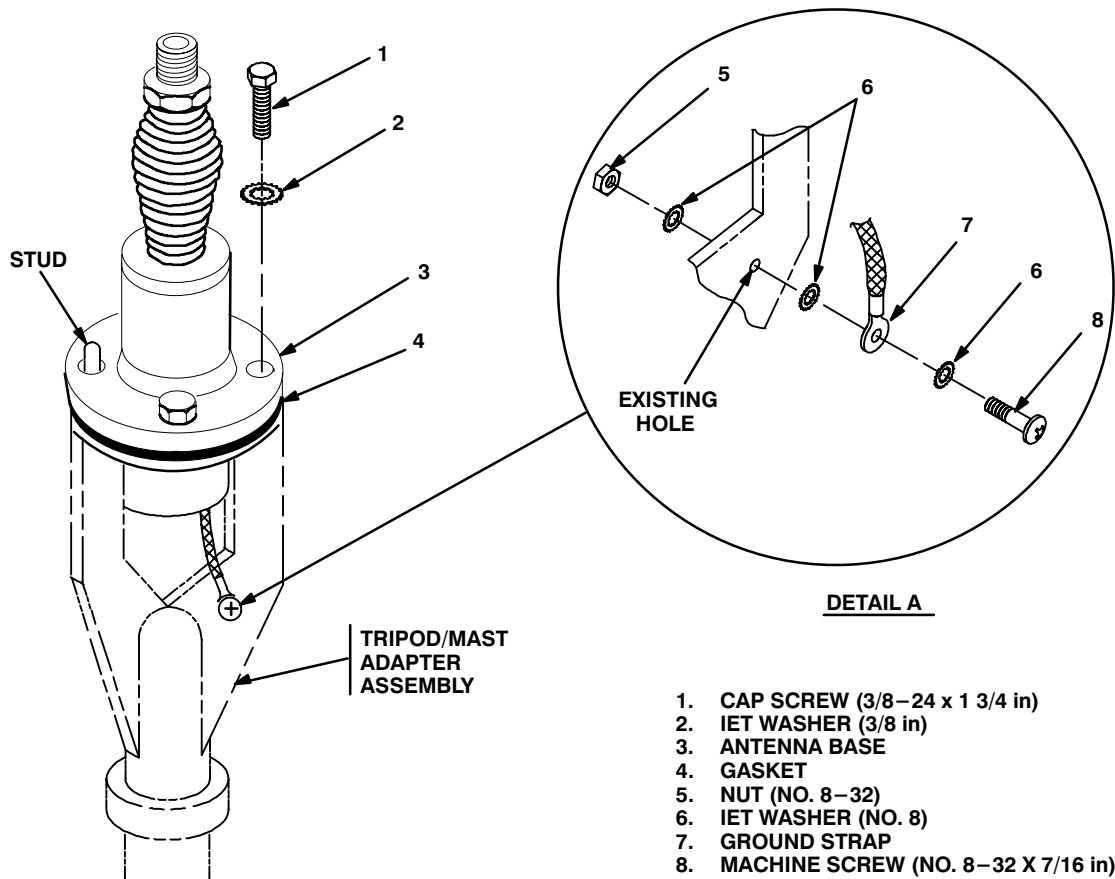
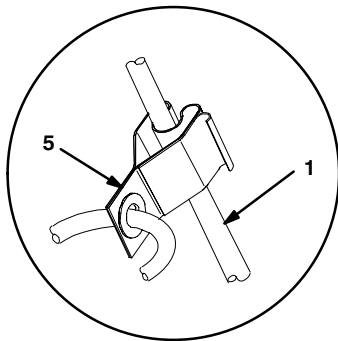


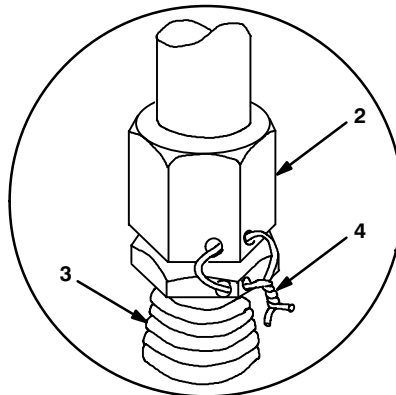
Figure 5-2 (2). Antenna Base Installation: Installing Tripod and Mast Antenna Bases

5.1.2 Installation of Top Antenna Assembly. The top portion of the antenna includes a lower element and an upper element (with installed cap). Use the following procedure to assemble, install and tie down all antennas.

ITEM	ACTION	REMARKS
a. Antenna elements (1, 2).	Apply silicone compound to element threads and assemble. See figure 5-3.	
b. Antenna element (2).	Install and hand-tighten to antenna base (3).	
c. Lock wire (4).	Install to antenna element (2) and antenna base (3). See figure 5-3, detail A.	
	Cut and remove excess wire with diagonal cutting pliers.	
d. Fiber rope assembly (5).	Attach clip to antenna element (1). Tie rope to vehicle to position antenna in desired location. See figure 5-3, detail B.	



DETAIL B



DETAIL A

- 1. ANTENNA ELEMENT (UPPER)
- 2. ANTENNA ELEMENT (LOWER)
- 3. ANTENNA BASE
- 4. LOCK WIRE
- 5. FIBER ROPE ASSEMBLY

Figure 5-3. Top Antenna Assembly Installation

5.2 Installation of Mounting Base, Electrical Equipment MT-6352/VRC (mounting base). Remove and retain attaching bag of 5/16 in mounting hardware for installation. To insure good electrical grounding, any rust, corrosion or paint around mounting holes in equipment rack shelf should be removed before installing mounting bases. See Figure 5-4 and perform steps b thru g to install both mounting bases.

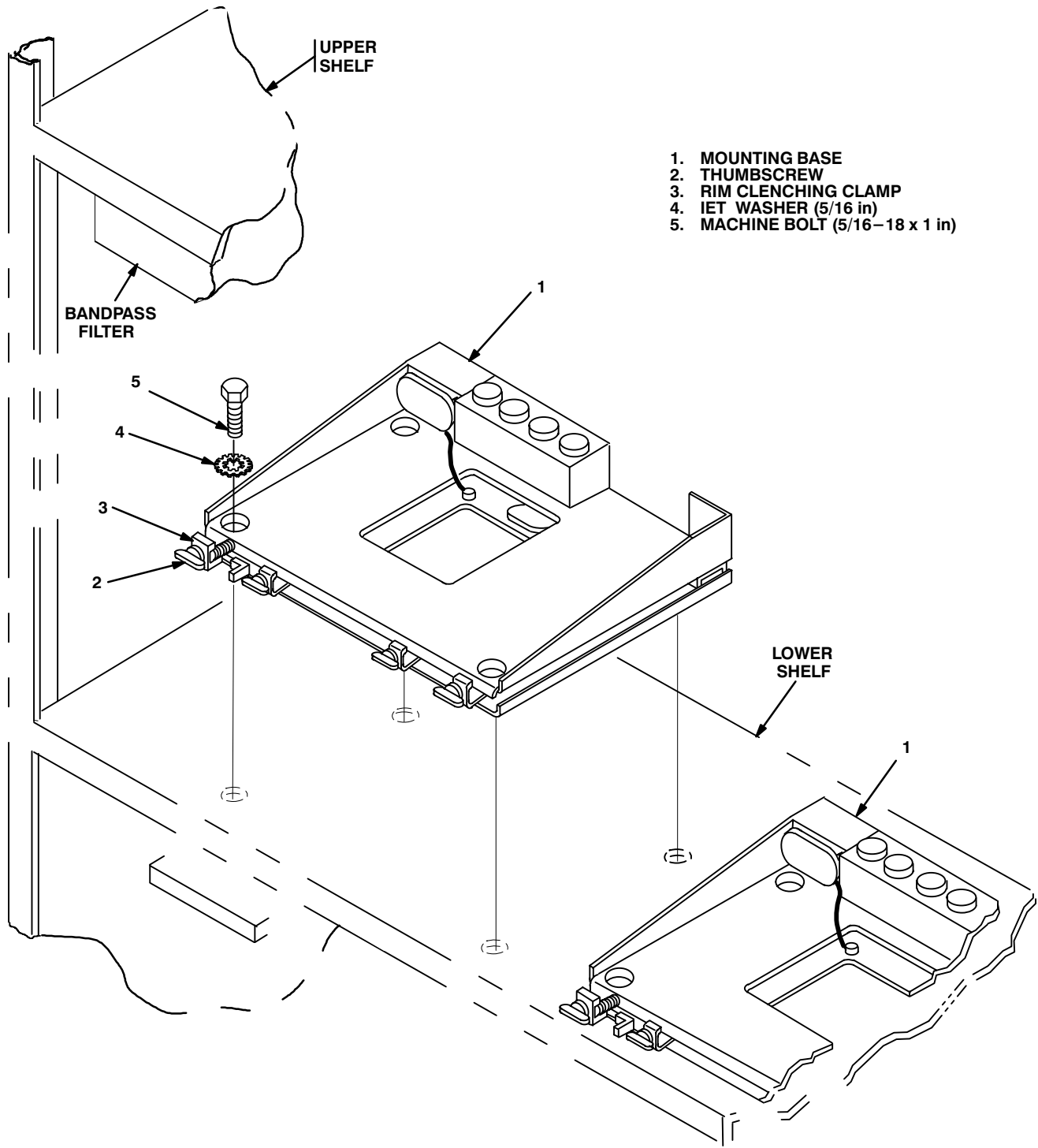


Figure 5-4. Mounting Base Installation: Equipment Rack

5.2 Installation of Mounting Base, Electrical Equipment MT–6352/VRC (mounting base). Continued

ITEM	ACTION	REMARKS
NOTE		
Apply a thin coat of adhesive–sealant to both sides of each internal/external–toothed (IET) washer during installation, and to the area of contact where IET washer is to be placed.		
a. Three bandpass filters.	Remove from front of upper shelf. See Figure 5–4.	
b. Mounting base (1) and existing lower shelf.	Remove a 2” square area of paint on the underside of the mounting base (1) around left front and rear mounting holes. Remove a 2” square area of paint on the existing radio shelf around the existing mounting holes that mate with left front and rear mounting holes of mounting base (1). Clean the paint removed areas and apply a thin coat of conductive anti–seize compound.	Tools: Electric grinder or equivalent.
c. Mounting base (1). (2).	Place on lower shelf over existing holes.	
d. Two outer thumbscrews (2).	Turn ccw until both sets of threads have cleared center of holes.	
e. Mounting base (1).	Align holes with matching hole pattern in shelf.	
f. Four machine bolts (5) and four IET washers (4).	Install and secure to mounting base (1) and shelf.	Tools: 1/2 in socket.
g. Two outer thumbscrews (2).	Tighten and secure to rim clenching clamps (3) and mounting base (1).	

5.3 Installation of Cables. To accomplish the installation, leave loop clamps and tiedown straps loose enough to adjust cable slack and allow easy adjustment of equipment. When installation is complete, tighten and secure clamps and tiedown straps.

WARNING

Make sure shelter power source is positioned OFF or disconnected before installing cables.

ITEM	ACTION	REMARKS
a. RF cable (2) connector P1.	Connect and secure to antenna base (1) connector J1. See figure 5-5 (1).	
b. Connector adapter (5).	Connect and secure to antenna entry panel connector FM-2. See Figure 5-5 (1), detail A.	

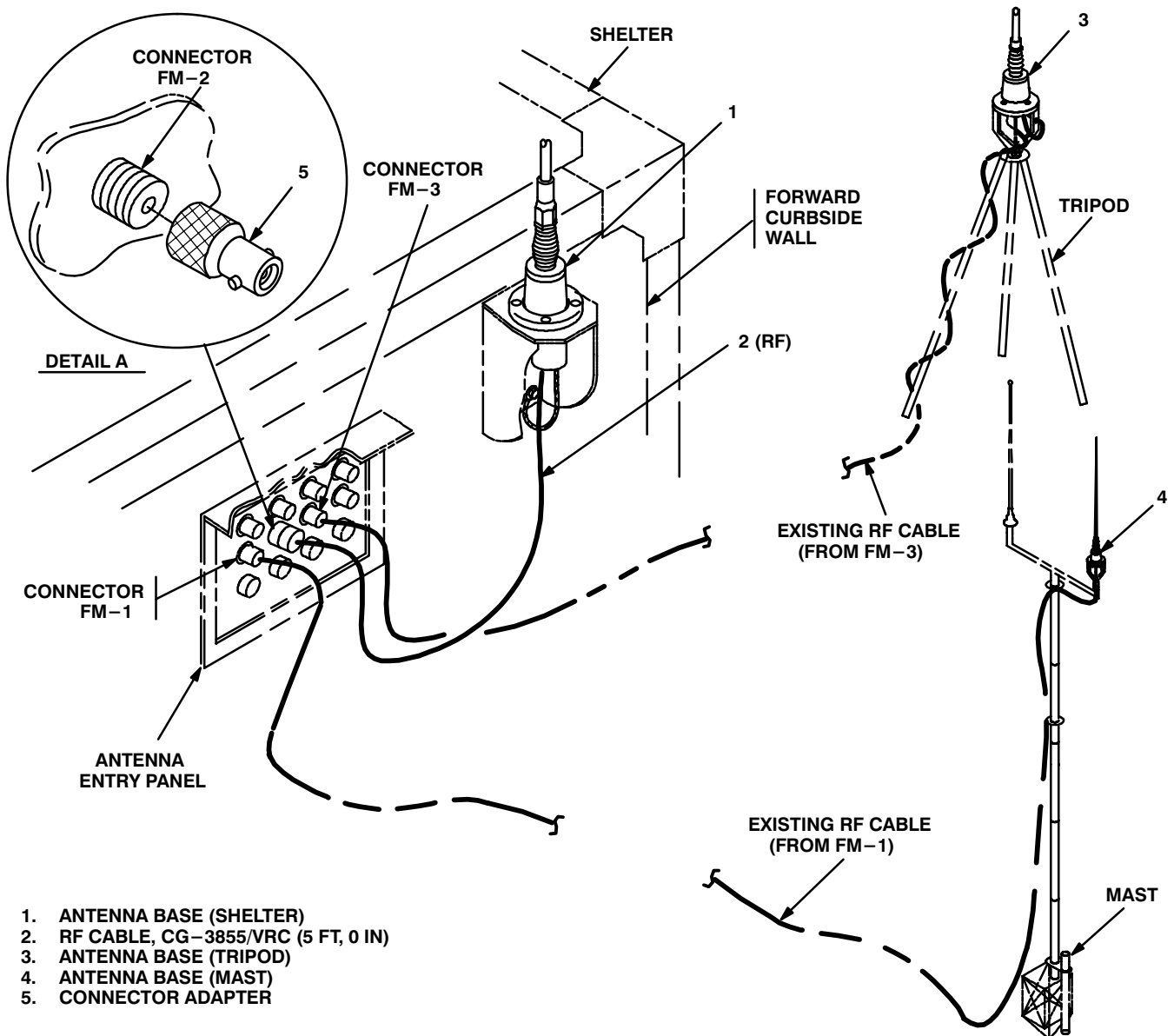


Figure 5-5 (1). Cable Installation: Exterior Cabling

5.3 Installation of Cables. Continued

ITEM	ACTION	REMARKS
c. RF cable (2) connector P2.	Connect and secure to connector adapter (5). See figure 5-5 (1).	
d. Existing RF cable from antenna entry panel connector FM-1.	Connect and secure to mast antenna base (4).	
e. Existing RF cable from antenna entry panel connector FM-3.	Connect and secure to tripod antenna base (3).	
f. Existing RF cable from antenna entry panel connector J11.	Position on top of lower equipment rack shelf. See figure 5-5 (2).	

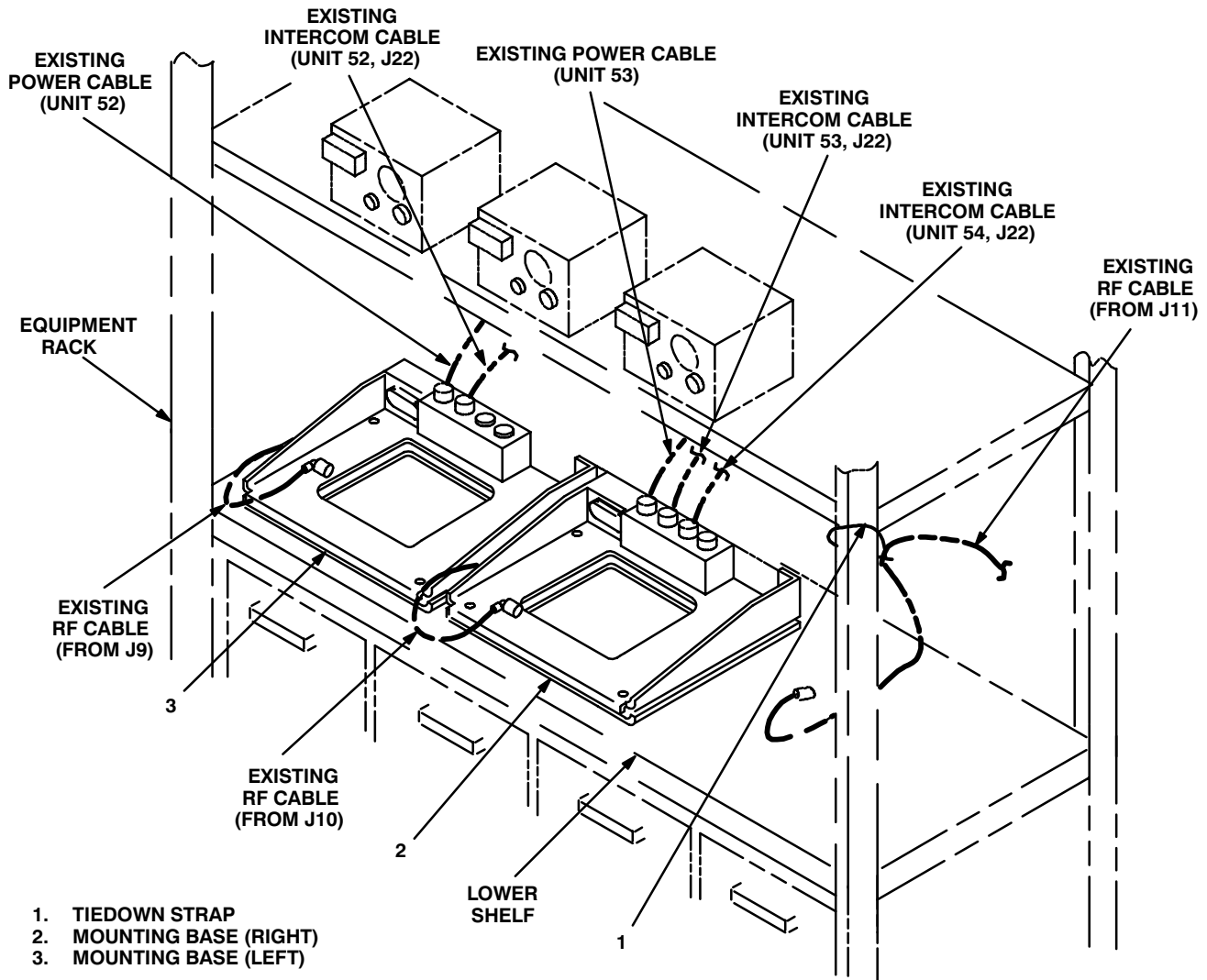


Figure 5-5 (2). Cable Installation: Interior Cabling

5.3 Installation of Cables. Continued

ITEM	ACTION	REMARKS
g. Tiedown strap (1).	Wrap around existing RF cable from connector J11, then secure to equipment rack. See figure 5–5 (2) for location(s).	
h. Existing RF cable from antenna entry panel connector J10.	Position on top of mounting base (2). See figure 5–5 (2).	
i. Existing RF cable from antenna entry panel connector J9.	Position on top of mounting base (3).	
j. Existing intercom cable from unit 52, connector J22.	Connect and secure to mounting base (3) connector J3.	
k. Existing intercom cable from unit 53, connector J22.	Connect and secure to mounting base (2) connector J3.	
l. Existing intercom cable from unit 54, connector J22.	Connect and secure to mounting base (2) connector J4.	
m. Existing power cable from unit 53.	Connect and secure to mounting base (2) connector J1.	
n. Existing power cable from unit 52.	Connect and secure to mounting base (3) connector J1.	

5.4 Installation of Mounting Base, Electrical Equipment MT-6353/VRC. Use the following procedure to install MT-6353/VRC mounting base in the location shown in figure 5-1 (2). Refer to section 5.5 for connection of cables.

ITEM	ACTION	REMARKS
------	--------	---------

NOTE

Apply a thin coat of adhesive-sealant to both sides of each internal/external-toothed (IET) washer during installation, and to the area of contact where IET washer is to be placed.

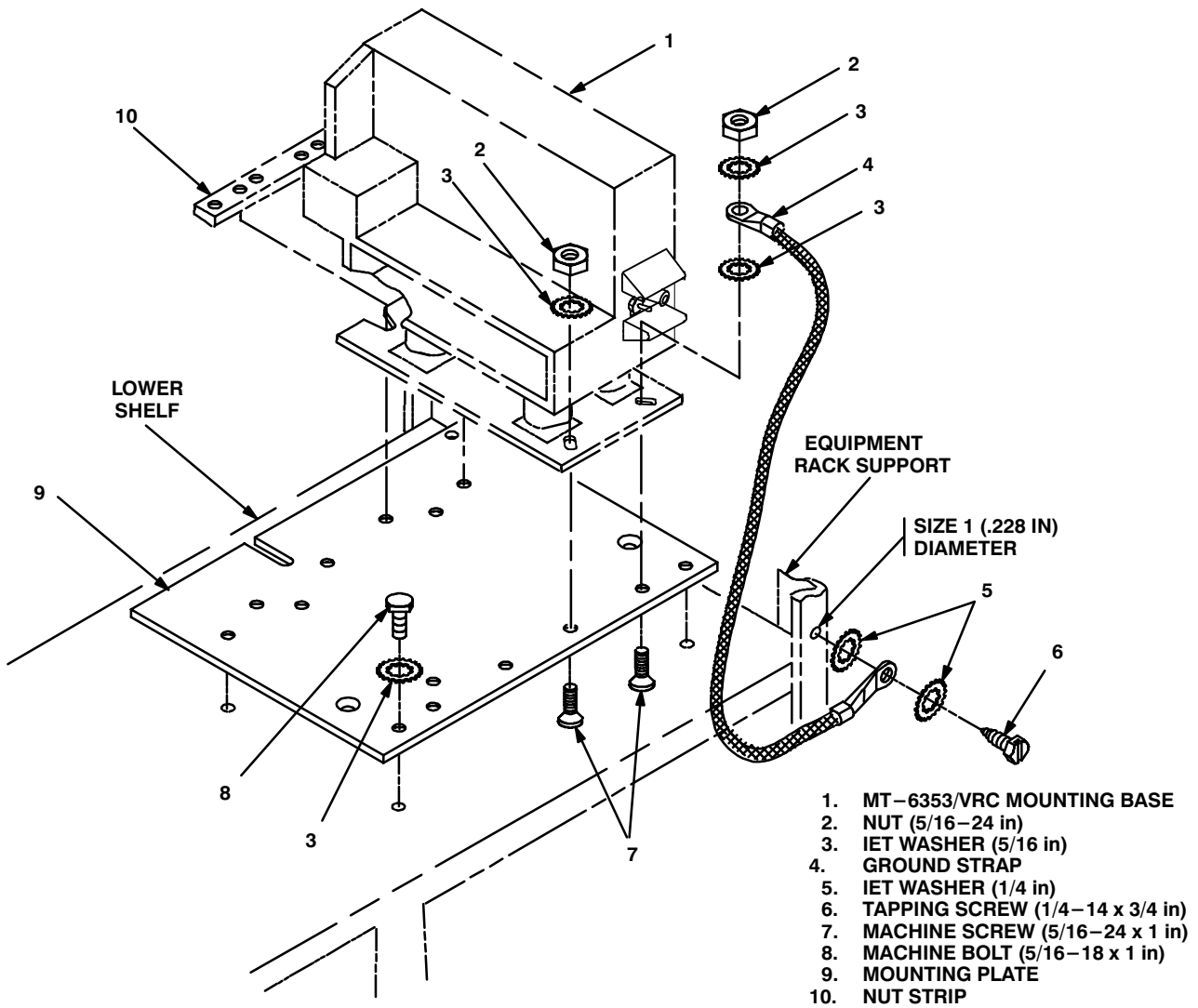


Figure 5-6. MT-6353/VRC Mounting Base Installation: Equipment Shelf

5.4 Installation of Mounting Base, Electrical Equipment MT–6353/VRC. Continued

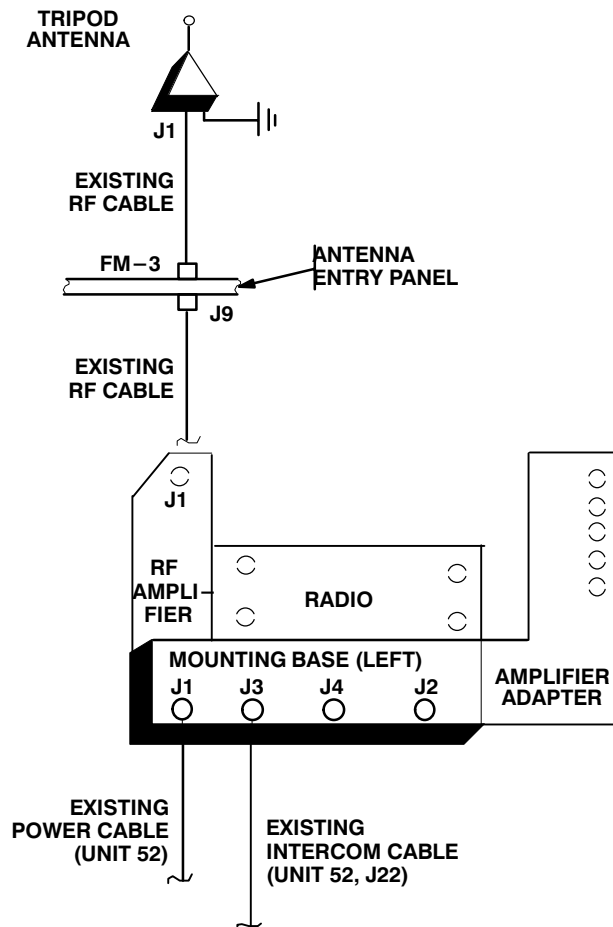
ITEM	ACTION	REMARKS
NOTE		
Before proceeding, connect and secure CX–13291/VRC control cable and CX–13303/VRC power cable to MT–6353/VRC mounting base. (Refer to section 5.6, step b.)		
a. MT–6353/VRC mounting base (1), mounting plate (9) and existing lower shelf	Remove a 2” square area of paint on the underside of the mounting base (1) around the front two mounting holes. Remove a 2” square area of paint on both sides of mounting plate (9) around two existing mounting holes that mate with mounting holes in mounting base (1). Remove a 2” square area of paint on the underside of four existing mounting holes in mounting plate (9) that mate with mounting holes in lower shelf. Remove a 2” square area of paint around four existing mounting holes in lower shelf. Clean the paint removed areas and apply a thin coat of conductive anti–seize compound.	Tools: Electric grinder or equivalent.
b. MT–6353/VRC mounting base (1).	Place on mounting plate (9) over existing holes. See Figure 5–6.	
c. MT–6353/VRC mounting base (1).	Align front holes and rear slots with matching hole pattern in mounting plate (9). See Figure 5–6.	
d. Two flat–head machine screws (7) and nut strip (10).	Install and secure to rear slots in MT–6353/VRC mounting base (1) and mounting plate (9).	Tools: Phillips screwdriver.
e. Ground strap (4), two flat-head machine screws (7), three IET washers (3) and two nuts (2).	Install and secure to front holes in MT–6353/VRC mounting base (1) and mounting plate (9).	Tools: Phillips screwdriver and 1/2 in wrench.
f. Mounting plate (9).	Place on lower shelf; then align mounting holes with matching hole pattern in shelf.	
g. Four machine bolts (8) and four IET washers (3).	Install and secure to mounting plate (9) and shelf.	Tools: 1/2 in socket.
h. Mounting hole for ground strap (4).	Drill a Size 1 (.228 in) diameter hole in equipment rack support. See Figure 5–6 for approximate location.	Tools: Electric drill and Size 1 drill bit.
i. Ground strap (4), hex–head tapping screw (6) and two IET washers (5).	Install and secure to hole drilled in step g.	Tools: 3/8 in socket.

5.5 Post–Installation and Checkout. After equipment is installed and cables are connected, perform the following steps.

ITEM	ACTION	REMARKS
a. Equipment.	Check for secure mounting. Check for loose parts, connectors and mounting hardware.	
b. Cables.	Check for proper installation and connection of cables. See figure 5–7 for cable connections. Unused cables should be stowed in appropriate place inside the shelter.	
c. Loop clamps.	Check that all have been properly installed and tightened.	
d. Protective covers.	Insure that all installed cables are covered when not in use or connected.	
e. Radio issued with shelter.	Install and connect cables. See TM 11–5820–890–20–1 or TM 11–5820–890–20–4 for installation and Operational (OP) Check instructions.	
f. MK line replaceable units.	See TM 11–5820–890–20P for Repair Parts and Special Tools List (RPSTL) information.	

5.5 Post-Installation and Checkout. Continued

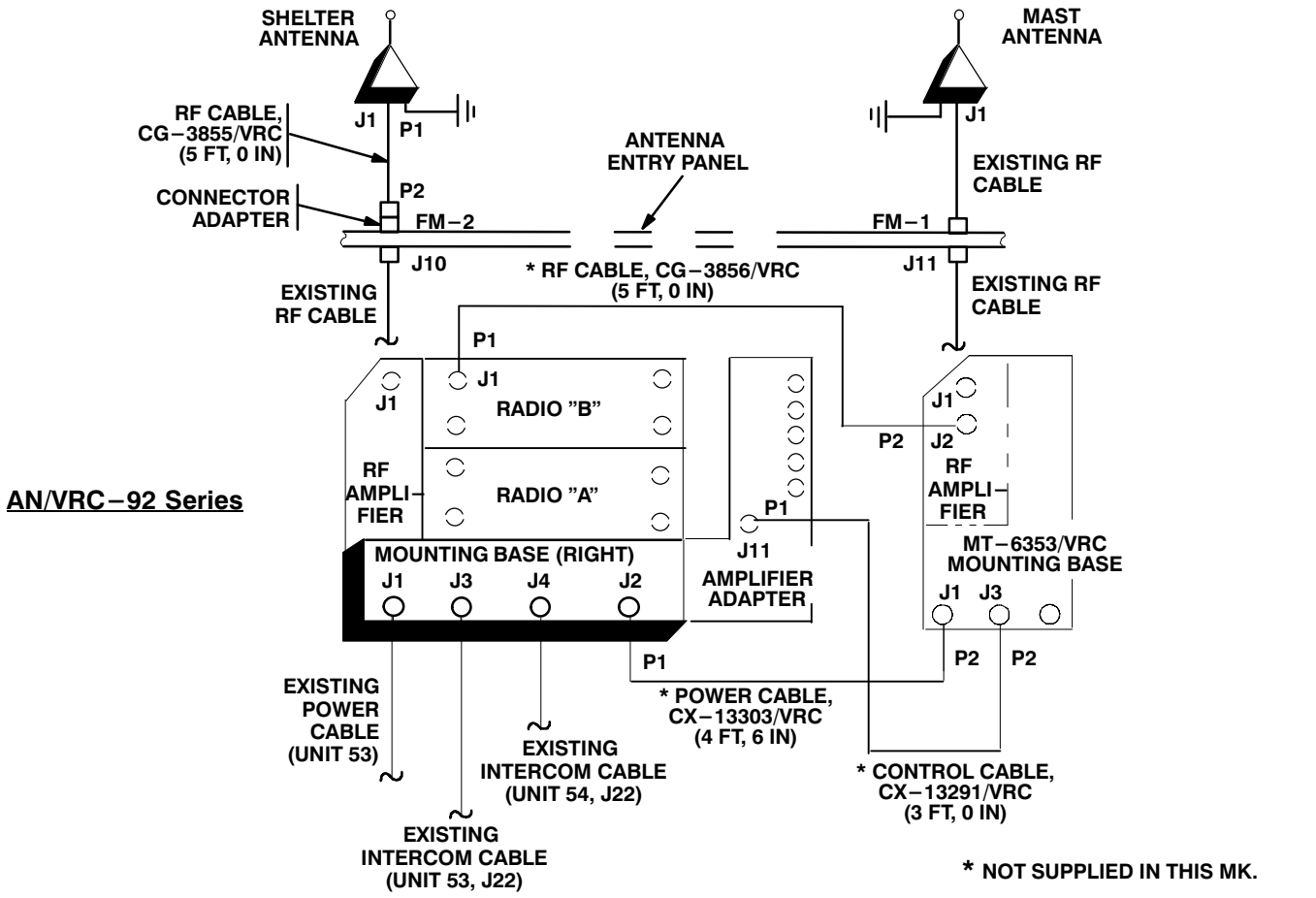
AN/VRC-90 Series



CABLE ASSEMBLY	FROM			TO		
	CABLE CONN.	UNIT	UNIT CONN.	CABLE CONN.	UNIT	UNIT CONN.
Existing RF cable		Tripod antenna base	J1		Antenna entry panel	FM-3
Existing RF cable		Antenna entry panel	J9		RF amplifier	J1
Existing power cable		Unit 52			Mounting base	J1
Existing intercom cable		Unit 52	J22		Mounting base	J3

Figure 5-7. Cable Diagram: For AN/VRC-90 Series and AN/VRC-92 Series

5.5 Post-Installation and Checkout. Continued



CABLE ASSEMBLY	FROM			TO		
	CABLE CONN.	UNIT	UNIT CONN.	CABLE CONN.	UNIT	UNIT CONN.
CG-3855/VRC (5 FT, 0 IN)	P1	Shelter antenna base	J1	P2	Connector adapter	FM-2
Existing RF cable		Mast antenna base	J1		Antenna entry panel	FM-1
Existing RF cable		Antenna entry panel	J10		RF amplifier (mounting base)	J1
Existing RF cable		Antenna entry panel	J11		RF amplifier (MT-6353/VRC)	J1
Existing power cable		Unit 53			Mounting base	J1
Existing intercom cable		Unit 53	J22		Mounting base	J3

Figure 5-7. Cable Diagram: For AN/VRC-90 Series and AN/VRC-92 Series Continued

APPENDIX A

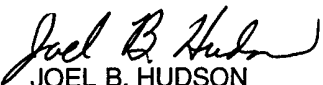
REFERENCES

AMDF	Army Master Data File (Microfiche)
AR 710-2	Supply Policy Below the Wholesale Level as Contained in Unit Supply UPDATE
AR 725-50	Requisitioning, Receipt and Issuing System in UPDATE
DA Pam 25-30	Consolidated Index of Army Publications (Microfiche)
DA Pam 710-2-1	Using Unit Supply System Manual Procedures as Contained in Unit Supply UPDATE
SB 11-131-2	Vehicular Radio Sets and Authorized Installations (SINCGARS)
TM 11-5820-890-10-1	Operator's Manual (ICOM Radio Sets)
TM 11-5820-890-10-3	Operator's Manual (Non-ICOM Radio Sets)
TM 11-5820-890-20-1	Unit Maintenance Manual (ICOM Radio Sets, Vol. 1)
TM 11-5820-890-20-2	Unit Maintenance Manual (ICOM Radio Sets, Vol. 2)
TM 11-5820-890-20-3	Unit Maintenance Manual handbook (ICOM Radio Sets)
TM 11-5820-890-20-4	Unit Maintenance Manual (Non-ICOM Radio Sets)
TM 11-5820-890-20P	Repair Parts and Special Tools List

By Order of the Secretary of the Army:

ERIC K. SHINSEKI
General, United States Army
Chief of Staff

Official:


JOEL B. HUDSON
Administrative Assistant to the
Secretary of the Army

9916720

DISTRIBUTION:

To be distributed in accordance with the initial distribution number (IDN) 369617 requirements for TB 11-5820-890-20-50.

SOMETHING WRONG WITH THIS PUBLICATION



THEN ... JOT DOWN THE INFO ABOUT IT ON THIS FORM. CAREFULLY TEAR IT OUT. FOLD IT AND DROP IT IN THE MAIL.

FROM: (PRINT YOUR UNIT'S COMPLETE ADDRESS)

Commander
Stateside Army Depot
ATTN: AMSTA-US
Stateside, NJ 07703-5007

DATE SENT

10 July 1995

PUBLICATION NUMBER

TM 11-5840-340-12

PUBLICATION DATE

23 Jan 74

PUBLICATION TITLE

Radar Set AN/PRC-76

BE EXACT PIN-POINT WHERE IT IS

IN THIS SPACE TELL WHAT IS WRONG AND WHAT SHOULD BE DONE ABOUT IT:

PAGE NO	PARA-GRAPH	FIGURE NO	TABLE NO
2-25	2-28		
3-10	3-3		3-1
5-6	5-8		
		FO-3	

Recommend that the installation antenna alignment procedure be changed throughout to specify a 20 IFF antenna lag rather than 10

REASON: Experience has shown that with only a 10 lag, the antenna servo system is too sensitive to gusting in excess of 25 knots, and has a tendency to rapidly accelerate and decelerate as it hunts, causing strain to the drive train. Hunting is minimized by adjusting the lag to 20 without degradation of operation.

Item 5, Functional column. Change 2 dB" to 3 dB".

REASON: The adjustment procedure for the TRANS POWER FAULT indicator call for a 3 dB (500 watts) adjustment to light the TRANS POWER FAULT indicator.

Add new step f.1 to read, Replace cover plate removed in step d above."

REASON: To replace the cover plate.

ZONE C 3. On J1-2, change +24 VDC" to +5 VDC".

REASON: This is the output line of the 5 VDC power supply. +24 VDC is the input voltage.

PRINTED NAME, GRADE OR TITLE AND TELEPHONE NUMBER

SSG I. M. DeSpirito 999-1779

SIGN HERE

TEAR ALONG DOTTED LINE

SOMETHING WRONG WITH THIS PUBLICATION



THEN ... JOT DOWN THE INFO ABOUT IT ON THIS FORM. CAREFULLY TEAR IT OUT. FOLD IT AND DROP IT IN THE MAIL.

FROM: (PRINT YOUR UNIT'S COMPLETE ADDRESS)

DATE SENT

PUBLICATION NUMBER

PUBLICATION DATE

PUBLICATION TITLE

BE EXACT PIN-POINT WHERE IT IS

IN THIS SPACE TELL WHAT IS WRONG AND WHAT SHOULD BE DONE ABOUT IT:

PAGE NO	PARA-GRAPH	FIGURE NO	TABLE NO

IN THIS SPACE TELL WHAT IS WRONG AND WHAT SHOULD BE DONE ABOUT IT:

TEAR ALONG DOTTED LINE

PRINTED NAME, GRADE OR TITLE AND TELEPHONE NUMBER

SIGN HERE

FILL IN YOUR
UNIT'S ADDRESS

FOLD BACK

DEPARTMENT OF THE ARMY



OFFICIAL BUSINESS

PLEASE
AFFIX
STAMP
POSTAGE
REQUIRED

TEAR ALONG DOTTED LINE

Commander
U.S. Army Communications-Electronics Command
and Fort Monmouth
ATTN: AMSEL-LC-LEO-D-CS-CFO
Fort Monmouth, New Jersey 07703-5000



FOLD BACK

